

BUTTERFLIES COMMON TO MARIN

and their Larval Host Plants

Thank you for appreciating the amazing flora of California. By including the following native plants in your garden, you are providing resources for an array of butterflies that depend on them as host plants for their caterpillars in the larval stage, and as sources of nectar for adult butterflies.



MIGRANTS

PAINTED LADY (LEFT). Aster Family: Thistles, pearly everlasting; Mallow family: Lavatera, hollyhock

MONARCH. Milkweeds only. Best species for the garden bed is *Asclepias fascicularis*.

URBAN HABITATS

ANISE SWALLOWTAIL. Carrot family: Parsley, dill, fennel, angelica, yampah, cow parsnip

CABBAGE WHITE. Mustard family: Wild mustard and radish; Also nasturium

COMMON CHECKERED SKIPPER. Mallow family: *Sidalcea*, *lavatera*, hollyhock, cheeseweed

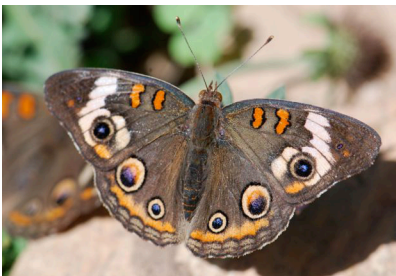
WEST COAST LADY. Mallow family: *Sidalcea*, *lavatera*, hollyhock

AMERICAN OR VIRGINIA LADY. Aster family: Cudweed, pearly everlasting, mugwort, thistles

OAK SAVANNAH AND GRASSLANDS

CALIFORNIA RINGLET. CA native bunchgrasses (*Poaceae*)

GRASS SKIPPERS. CA native bunchgrasses; Sometimes lawn grasses if mower blades are set high



ORANGE SULFUR (RIGHT). Pea family: Vetch, lotus, clover, alfalfa

MYLITTA CRESCENT. Aster family: Mostly thistles

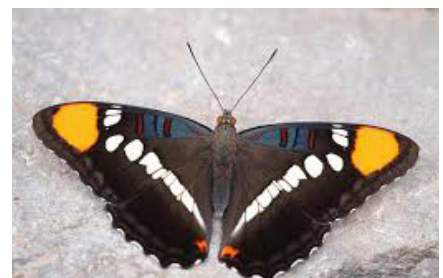
FIELD CRESCENT. Aster family: Mostly *Aster chilensis*

COMMON BUCKEYE (LEFT). Snapdragon family: Mimulus, penstemon; Mare's tail (*Hippuris vulgaris*)

OAK WOODLAND

CALIFORNIA SISTER (RIGHT). CA native oaks, usually coast live oak

MOURNFUL DUSKYWING. CA native oaks, usually coast live, blue or valley oaks



RIPARIAN

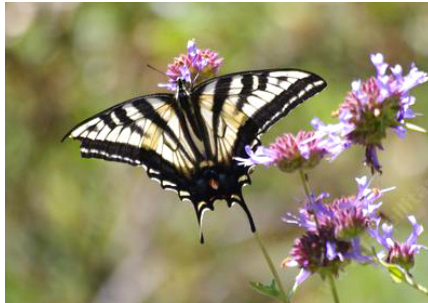
WESTERN TIGER SWALLOWTAIL. Willow, alder, sycamore, ash and sometimes *prunus* spp.

PIPEVINE SWALLOWTAIL. California Pipevine (*Aristolochia californica*) only!

RED ADMIRAL. Nettle family: stinging nettles, pellitory, sometimes baby's tears

LORQUIN'S ADMIRAL. Willow; *Prunus* spp. such as cherry and other fruit trees; also Cream Bush (*Holodiscus discolor*)

MOURNING CLOAK (RIGHT). Willow, Alder, Poplar and Elm species



CHAPARRAL

PALE SWALLOWTAIL (LEFT). Cream Bush (*Holodiscus discolor*); *Prunus* spp., esp. *Prunus ilicifolia* and coffeeberry

GRAY OR COMMON HAIRSTREAK. Pea family: alfalfa, clover; also coffeeberry

ACMON BLUE. Pea family; Buckwheat family

SILVERY BLUE. Pea family: Various *lotus* spp., lupine, vetch, clover

SPRING AZURE. Ceanothus, Cream Bush (*Holodiscus discolor*), buckeye, creek dogwood



compiled by:

Charlotte Torgovitsky | HOME GROUND HABITATS

For much more detail on butterfly life cycles, developing habitat for butterflies, etc., visit www.homegroundhabitats.org