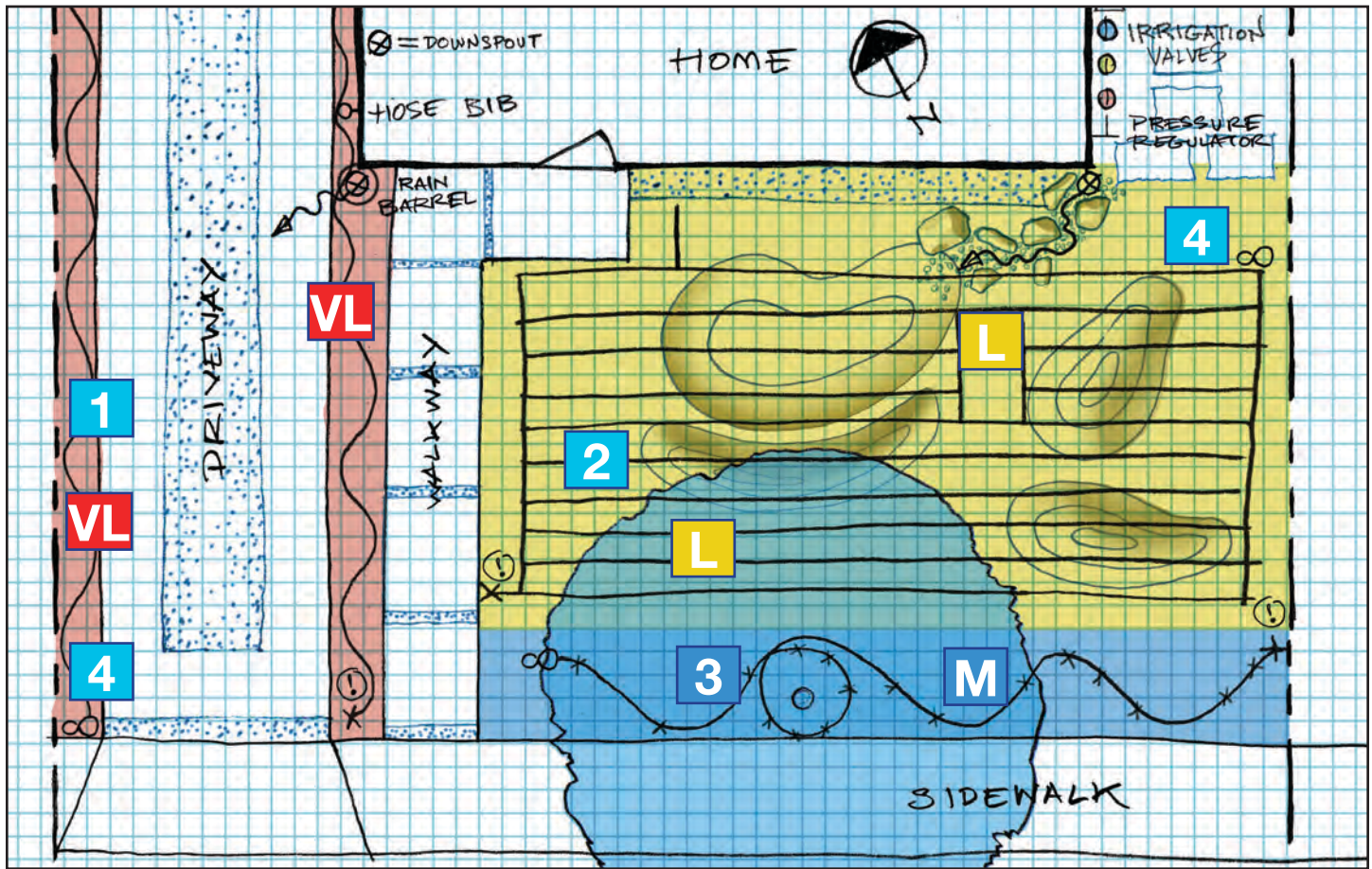


Match Irrigation to new Hydrozones



© G3, Alex Stevens, 2018

Adjust Valve Zones to Hydrozones.

Which sprinkler heads go on at the same time and what kind of plant material are they irrigating? Get ready to make changes to your irrigation system in order to accommodate both the new grading and the new plants you are introducing into your garden. In our example garden, we have three different hydrozones.

- VL** **VERY LOW** water use plants in the strips along the driveway will have **in-line drip irrigation in a random pattern** around each plant.
- L** **LOW** water use plants in front yard dry creek and berm areas will have an **in-line drip irrigation line in a grid pattern**; the grid pattern is better for situations where you want to achieve a more uniform wetting pattern that works especially well with groundcovers and high-density mixed planting.
- M** **MODERATE** water use plants in the parkway will have an **on-line or "point source" drip irrigation line in a random**

- pattern** around each plant; note that the tree gets special attention with an extra ring to accommodate its expected growth.
- END FIGURE "8" FLUSH VALVE**
- TATTLE TALE**
- ONLINE DRIP LINE**
- INLINE DRIP LINE**
- MULCH OR GRAVEL**

Images courtesy of Rain Bird Corporation

